

# Moving to Shibboleth at the University of Dundee

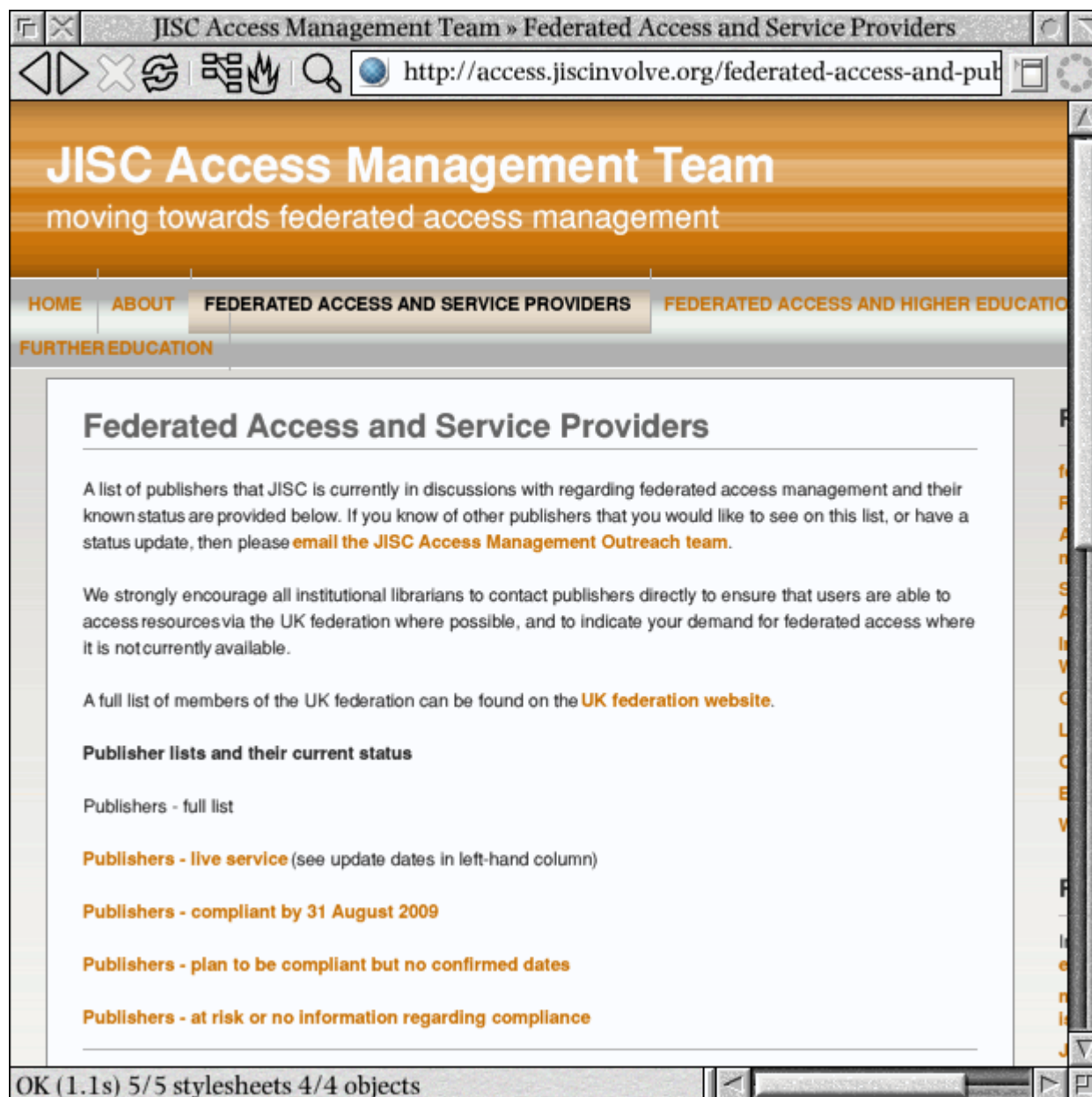
Matthew Phillips  
Systems Librarian



# Contacting publishers

- Are they preparing for Shibboleth?
- When will they be ready?
- Will they allow IP authentication?
- Do they support EZProxy?
- Do they have your IP range correct?
- Transfer of personalisation: any plans?

See <http://access.jiscinvolve.org/federated-access-and-publishers/>



# Testing the Shibboleth implementations

- Have your IdP ready!
- Release all core attributes (except eduPersonPrincipalName) by default
- Off-campus testing facility useful
  - dial up
  - broadband
  - eduRoam: check IP ranges again
  - at home
- Move people over early if you can

# EZProxy as a fall-back

- Easy to set up
- Can use Shibboleth authentication!
- Set up all the Athens services
  - Even if they say they will be ready
- Can set up non-Athens services too
- May lose personalisation

# Testing personalisation

- Is personalisation tied to the Athens account?
- Is a transfer mechanism planned?
- How many users are using the features?
- How important is the personalisation?
- Get information out to users in plenty of time

Library: Electronic resources: accessing specific resources

http://www.dundee.ac.uk/library/eresources/e-resource-access-db.php?

DUNDEE

- about your library
- search your library
- library guides and training
- electronic resources
- resources for your subject
- what's new?

## Accessing British Education Index

**On campus**  
Access is via the Library proxy server.

- [Connect to British Education Index](#)

**Off campus**  
Access is via the Library proxy server.

- [Connect to British Education Index](#)

## Personalized features: saved searches, alerts

If you have saved searches or set up alerts, these are tied to your Athens username and will not be accessible after the end of July 2008.

E-mail alerts will probably continue to be delivered to users following 31st July, but users will be unable to log in to their former Athens accounts to modify or cancel these alerts.

We advise you to log in before 31st July and note down any saved searches or alerts which you wish to retain. It is probably best to cancel the alerts and to recreate them after 31st July via the new UK Federation login method.

Unfortunately Dialog will not be adopting the UK Federation login immediately. The Library will continue to make the Dialog databases available on and off campus via a proxy server, but for a while users will be unable to save searches or create alerts.

OK (0.8s) 4/4 stylesheets 62/62 objects

# Managing the information

- Web-mounted database (in PHP/MySQL)
- Admin side accessible off campus
- Library web pages pull links from database



## Edit record

When you have finished, please [log out](#).

Code:

Service name:

On campus:  URL:  [Test](#)

Off campus:  URL:  [Test](#)

Current or former Athens  
resource:


URLs:

For special usernames/passwords, fill in the following boxes, otherwise leave blank.

Username:

Password:

Public note:

 <https://secure.gundee.ac.uk/library/staff/form.php?edcode=e/151101090d9949041>

Personal settings:

Personal features available:

Transition arrangements:

Instructions on how to move settings: (Enter a complete blank line to start a new paragraph)

Summary of status:



# Other updates required

- Catalogue records: get clear information to your systems librarian!
- MetaLib
- SFX
- Links within VLE modules
- Advice to academics
- Induction presentations; training material

# User education

- Don't click Athens!
- Institutional login
- or ...

[Login](#) using your Shibboleth or Athens ID

[Athens Login](#) | [Institutional Login](#)

### Further and higher education users:

[Log in via the Athens service](#) | [Athens Logout](#)

[Remote users: login via your home organisation](#)

[More information on remote access](#) 

### CSA Illumina Login

Username   
Password

- [Athens Login](#)
- [Shibboleth Login](#)
- [My Research Login](#)

**Login**  via UK federation. [\[info\]](#)

### Login

User ID   
Password

[Shibboleth Login](#) | [Athens Login](#)

### UK Federation Login

-- Select an Identity Provider --

Please **log in** via your home organisation  
(UK higher and further education only)

### Universities

Aberdeen, University of

ACCESS JSTOR THROUGH A PARTICIPATING INSTITUTION

[Athens login](#)

#### 1. Select your country:

All Sites

#### 2. Select your Institution:

Aberystwyth University

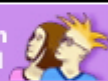
[View all institutions](#)

Why is my institution not listed here? 

### Logging In

Username:

### Forgotten Password



For Glow users  
[Glow Log In](#)

For Shibboleth / UK  
Federation users  
[Shibboleth Log In](#)

For ATHENS users in  
HE & FE  
[ATHENS Log In](#)

User Login

via UK Federation



Contributor Login

via UK Federation



### LOG IN :

Username:

Password:

Athens Users : [LOG IN](#) | [LOG OUT](#)

[Remote users: login via your home organisation](#)

[More information on remote access](#) 

### Library barcode login

Barcode

[Eduserv Athens login](#)

Login via your home institution

### Athens / Other Institution login



SpringerLink

Institutional Login

Welcome!

To use the personalized features  
of this site, please log in or  
register.

### OED Online Subscribers

User name

Password

### Short-cuts

- [Subscribe to OED Online](#)
- [Tour of OED Online](#)
- [Forgotten your password?](#)
- [Sign in via Athens or your institution](#)
- [BT Click&Buy sign in](#)

[Login](#) using your Shibboleth or Athens ID

[Athens Login](#) | [Institutional Login](#)

### Further and higher education users:

[Log in via the Athens service](#) | [Athens Logout](#)

[Remote users: login via your home organisation](#)

[More information on remote access](#) 

### CSA Illumina Login

Username   
Password

- [Athens Login](#)
- [Shibboleth Login](#)
- [My Research Login](#)

**Login**  via UK federation. [\[info\]](#)

### Login

User ID   
Password

[Shibboleth Login](#) | [Athens Login](#)

### UK Federation Login

-- Select an Identity Provider --

Please **log in** via your home organisation  
(UK higher and further education only)

### Universities

Aberdeen, University of

ACCESS JSTOR THROUGH A PARTICIPATING INSTITUTION

[Athens login](#)

#### 1. Select your country:

All Sites

#### 2. Select your Institution:

Aberystwyth University

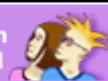
[View all institutions](#)

Why is my institution not listed here? 

### Logging In

Username:

### Forgotten Password



For Glow users  
[Glow Log In](#)

For Shibboleth / UK  
Federation users  
[Shibboleth Log In](#)

For ATHENS users in  
HE & FE  
[ATHENS Log In](#)

User Login

via UK Federation



Contributor Login

via UK Federation



### LOG IN :

Username:

Password:

Athens Users : [LOG IN](#) | [LOG OUT](#)

[Remote users: login via your home organisation](#)

[More information on remote access](#) 

### Library barcode login

Barcode

[Eduserv Athens login](#)

Login via your home institution

### Athens / Other Institution login



SpringerLink

Institutional Login

Welcome!

To use the personalized features  
of this site, please log in or  
register.

### OED Online Subscribers

User name

Password

### Short-cuts

- [Subscribe to OED Online](#)
- [Tour of OED Online](#)
- [Forgotten your password?](#)
- [Sign in via Athens or your institution](#)
- [BT Click&Buy sign in](#)

# User education


- Don't click Athens!
- Institutional login
- or ...
- "If you get stuck, use the links from the Library web pages"
- Altered AthensDA login screen
- Circular e-mail to staff and students



Library: Electronic resources login

http://www.dundee.ac.uk/library/passwords/login.php

Text only



The banner features the University of Dundee logo on the left, followed by the word "Library" in a large, stylized font. Below the banner is a row of six buttons: "about your library", "search your library", "library guides and training", "electronic resources", "resources for your subject", and "what's new?".

## Electronic resources login

The Athens system was replaced on 1st August 2008 by a new system.

- [Further information on the replacement of Athens](#)

Please follow the links from the following list to find out how to log in to resources which were formerly authenticated via Athens. For some services there is additional information explaining what will happen to personal settings such as saved searches, alerts and annotations.

- [17th and 18th Century Burney Collection](#)
- [19th Century British Library Newspapers](#)
- [a-n The Artists Information Company](#)
- [Adept Scientific \(Adept4Education\)](#)
- [American Accounting Association](#)

OK (0.9s) 4/4 stylesheets 62/62 objects

# Support issues

- Putting username/password in wrong box
- Using wrong username
- Where is MyAthens?
- Access to logs harder
- Loss of personalisation

# Still to do

- Lobby publishers to support Shibboleth
- Lobby publishers to improve login design
- Shibbolise your own services
- WAYFless URLs

Scopus - Results: SRCTITLE(oxford) - Mozilla Firefox

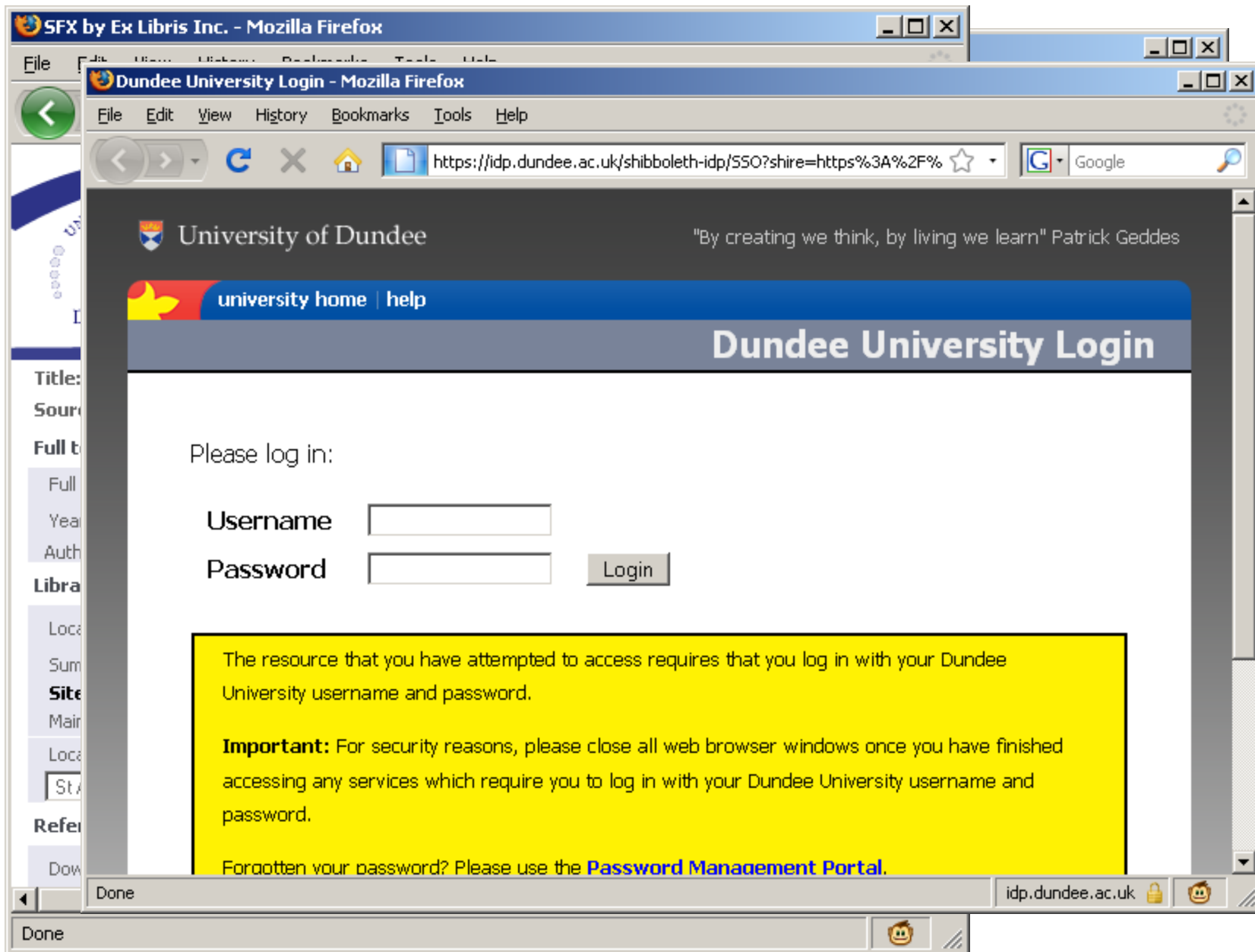
File Edit View History Bookmarks Tools Help

http://www.scopus.com/results/results.url?sort=plf-f&src=s&st1=oxford& Google

	<a href="#">Abstract + Refs</a>	<a href="#">L / nk to @ Dundee</a>	<a href="#">Show</a>			
	<a href="#">Abstract</a>			<a href="#">Han, M., Vancso, G.J.</a>	34 (5), pp. 393-430	
10. <input type="checkbox"/>	<b>Ambiguity and social interaction</b>	<a href="#">Abstract + Refs</a>	<a href="#">L / nk to @ Dundee</a>	<a href="#">Show</a>	<a href="#">Eichberger, J., Kelsey, D., Schipper, B.C.</a>	2009 <i>Oxford Economic Papers</i> 61 (2), pp. 355-379 0
	<a href="#">Abstract</a>					
11. <input type="checkbox"/>	<b>Central bank communication and output stabilization</b>	<a href="#">Abstract + Refs</a>	<a href="#">L / nk to @ Dundee</a>	<a href="#">Show</a>	<a href="#">Hoeberichts, M., Tesfaselassie, M.F., Eijffinger, S.</a>	2009 <i>Oxford Economic Papers</i> 61 (2), pp. 395-411 0
	<a href="#">Abstract</a>					
12. <input type="checkbox"/>	<b>Gender wage differentials, job search, and part-time employment in the UK</b>	<a href="#">Abstract + Refs</a>	<a href="#">L / nk to @ Dundee</a>	<a href="#">Show</a>	<a href="#">Bowlus, A.J., Grogan, L.</a>	2009 <i>Oxford Economic Papers</i> 61 (2), pp. 275-303 0
	<a href="#">Abstract</a>					
13. <input type="checkbox"/>	<b>Working hours flexibility and older workers' labor supply</b>	<a href="#">Abstract + Refs</a>	<a href="#">L / nk to @ Dundee</a>	<a href="#">Show</a>	<a href="#">Gielen, A.C.</a>	2009 <i>Oxford Economic Papers</i> 61 (2), pp. 240-274 0
	<a href="#">Abstract</a>					
14. <input type="checkbox"/>	<b>Job security and job protection</b>	<a href="#">Abstract + Refs</a>	<a href="#">L / nk to @ Dundee</a>	<a href="#">Show</a>	<a href="#">Clark, A., Postel-Vinay, F.</a>	2009 <i>Oxford Economic Papers</i> 61 (2), pp. 207-239 0
	<a href="#">Abstract</a>					
15. <input type="checkbox"/>	<b>Nanoscale particles for polymer</b>				<a href="#">Kumar, A.P., Depan,</a>	2009 <i>Progress in Polymer</i> 0

Done





SFX by Ex Libris Inc. - Mozilla Firefox

Central bank communication and output stabilization -- Hoeberichts et al. 61 (2): 395 -- Oxford Economic Papers - Mozilla Firefox

File Edit View History Bookmarks Tools Help

http://oep.oxfordjournals.org/cgi/reprint/61/2/395

PDFaloud

1 / 17 75% Find

Options

© Oxford University Press 2008  
All rights reserved

*Oxford Economic Papers* 61 (2009), 395–411 395  
doi:10.1093/oep/gpn023

## Central bank communication and output stabilization

By Marco Hoeberichts\*, Mewael F. Tesfaselassie†, and Sylvester Eijffinger‡

\*De Nederlandsche Bank and University of Amsterdam, Financial Research Department, P.o.Box 98, 1000 AB Amsterdam, The Netherlands; e-mail: M.M.Hoeberichts@dnb.nl

†Kiel Institute for the World Economy; e-mail: mewael.tesfaselassie@ifw-kiel.de

‡CentER, Tilburg University, and RSM Erasmus University and CEPR; e-mail: s.c.w.eijffinger@uvt.nl

Central banks around the world have a reputation for being secretive about their operations and market assessments. It is sometimes argued that central banks need flexibility and therefore cannot be fully transparent. We find that this explanation does not carry through in a forward-looking New Keynesian framework, where transparency about the central bank's forecasting procedures improves output stabilization. We also show that higher transparency increases optimal conservatism, as the benefits from higher transparency in terms of output stabilization are greater the more conser-

OXFORD ECONOMIC PAPERS

JOURNAL HOME HELP FEEDBACK  
SUBSCRIPTIONS ARCHIVE SEARCH  
TABLE OF CONTENTS

**This Article**

PDF version of:  
Hoeberichts et al. 61 (2): 395.  
(2009)

Abstract **FREE**  
Full Text (HTML)  
Supplementary Data  
All Versions of this Article:  
61/2/395 **most recent**  
gpn023v1  
Alert me when this article is cited  
Alert me if a correction is posted

Services

Email this article to a friend  
Similar articles in this journal  
Alert me to new issues of the journal  
Add to My Personal Archive  
Download to citation manager  
Request Permissions

# WAYFless URLs

- A link which tells the Service Provider which Identity Provider to use
- Catalogue; MetaLib; SFX; web site; VLE
- What level of linking is supported?
- Support in MetaLib and SFX still lacking



Questions / discussion